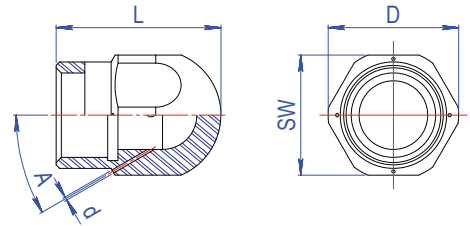


Sewer Nozzles Curved Head



Order Number	Part Number	W.P.		Connection	D (mm)	L (mm)	Holes No.	d (mm)	A	SW (mm)	Q (l/min)
		bar	psi								
CH01	CH4-B12-B-08	280	4000	Female-3/8" BSPP	24	29	4	0.8	4x30°	23	50-250
CH02	CH4-B12-B-10	280	4000	Female-3/8" BSPP	24	29	4	1	4x30°	23	50-250
CH03	CH4-B12-B-12	280	4000	Female-3/8" BSPP	24	29	4	1.2	4x30°	23	50-250
CH04	CH4-B12-B-14	280	4000	Female-3/8" BSPP	24	29	4	1.4	4x30°	23	50-250
CH05	CH4-B12-B-16	280	4000	Female-3/8" BSPP	24	29	4	1.6	4x30°	23	50-250
CH06	CH4-B12-B-18	280	4000	Female-3/8" BSPP	24	29	4	1.8	4x30°	23	50-250
CH07	CH4-B12-B-20	280	4000	Female-3/8" BSPP	24	29	4	2	4x30°	23	50-250
CH08	CH4-B16-B-08	280	4000	Female-1/2" BSPP	33	43	4	0.8	4x30°	30	50-250
CH09	CH4-B16-B-10	280	4000	Female-1/2" BSPP	33	43	4	1	4x30°	30	50-250
CH10	CH4-B16-B-12	280	4000	Female-1/2" BSPP	33	43	4	1.2	4x30°	30	50-250
CH11	CH4-B16-B-14	280	4000	Female-1/2" BSPP	33	43	4	1.4	4x30°	30	50-250
CH12	CH4-B16-B-16	280	4000	Female-1/2" BSPP	33	43	4	1.6	4x30°	30	50-250
CH13	CH4-B16-B-18	280	4000	Female-1/2" BSPP	33	43	4	1.8	4x30°	30	50-250
CH14	CH4-B16-B-20	280	4000	Female-1/2" BSPP	33	43	4	2	4x30°	30	50-250
CH15	CH4-B20-B-08	280	4000	Female-3/4" BSPP	38	48	4	0.8	4x30°	35	50-250
CH16	CH4-B20-B-10	280	4000	Female-3/4" BSPP	38	48	4	1	4x30°	35	50-250
CH17	CH4-B20-B-12	280	4000	Female-3/4" BSPP	38	48	4	1.2	4x30°	35	50-250
CH18	CH4-B20-B-14	280	4000	Female-3/4" BSPP	38	48	4	1.4	4x30°	35	50-250
CH19	CH4-B20-B-16	280	4000	Female-3/4" BSPP	38	48	4	1.6	4x30°	35	50-250
CH20	CH4-B20-B-18	280	4000	Female-3/4" BSPP	38	48	4	1.8	4x30°	35	50-250
CH21	CH4-B20-B-20	280	4000	Female-3/4" BSPP	38	48	4	2	4x30°	35	50-250

The lightweight, curved design, and small size of the Curved Head Nozzle make it easy to move around pipes using the rear outlets and push back sediment without damaging the pipe walls. This nozzle is one of the best pieces of equipment for cleaning small pipe walls.

The curved shape allows for the thorough washing of sewer pipes which contain sediments such as sand, sludge, and mud. The surface is coated with special, abrasion-resistant materials that ensure long life and allow the nozzle to work up to 280 bar for maximum efficiency and performance.