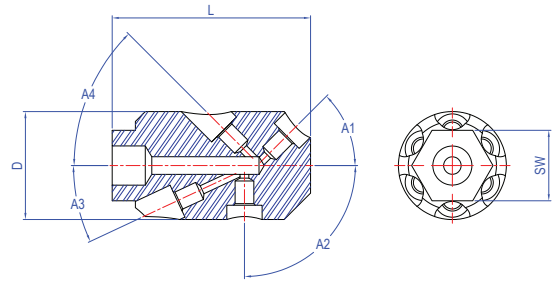


SVC

SPEED MAJOR CLEANING





Order Number	Part Number	W.P.		Connection	D (mm)	L (mm)	Insert Nozzles No.	Insert Size	A1	A2	A3	A4	SW (mm)	Weight (kg)
		bar	psi											
FGH01	FGH10-N9-LLBB	700	10000	Female-1/2" NPT	49	90	15	3/8" UNF	3x45°	3x90°	6x25°	3x45°	32	0.8
FGH02	FGH10-U19-LLBB-LH	700	10000	Female-9/16" UNF-LH	34	70	15	1/4" UNF	3x45°	3x90°	6x25°	3x45°	22	0.3

SMC's Fighter is one of the best options to open blockages and clean inside the pipes simultaneously with high accuracy and high pressure.

The numerous backward holes in this nozzle cause a strong reaction force in the pipes. Its lateral outlets also allow the walls to be thoroughly washed. There are three 45-degree outlets at the front of the nozzle which help

open and clean pipe blockages.

SMC's Fighter is made of stainless steel and is reinforced with special materials on the outer surface that will extend its lifetime. The type of insert used is made of sapphire, which is highly pressure resistant. Inserts are specially positioned on the body in order to prevent their collision with external hard sediment.