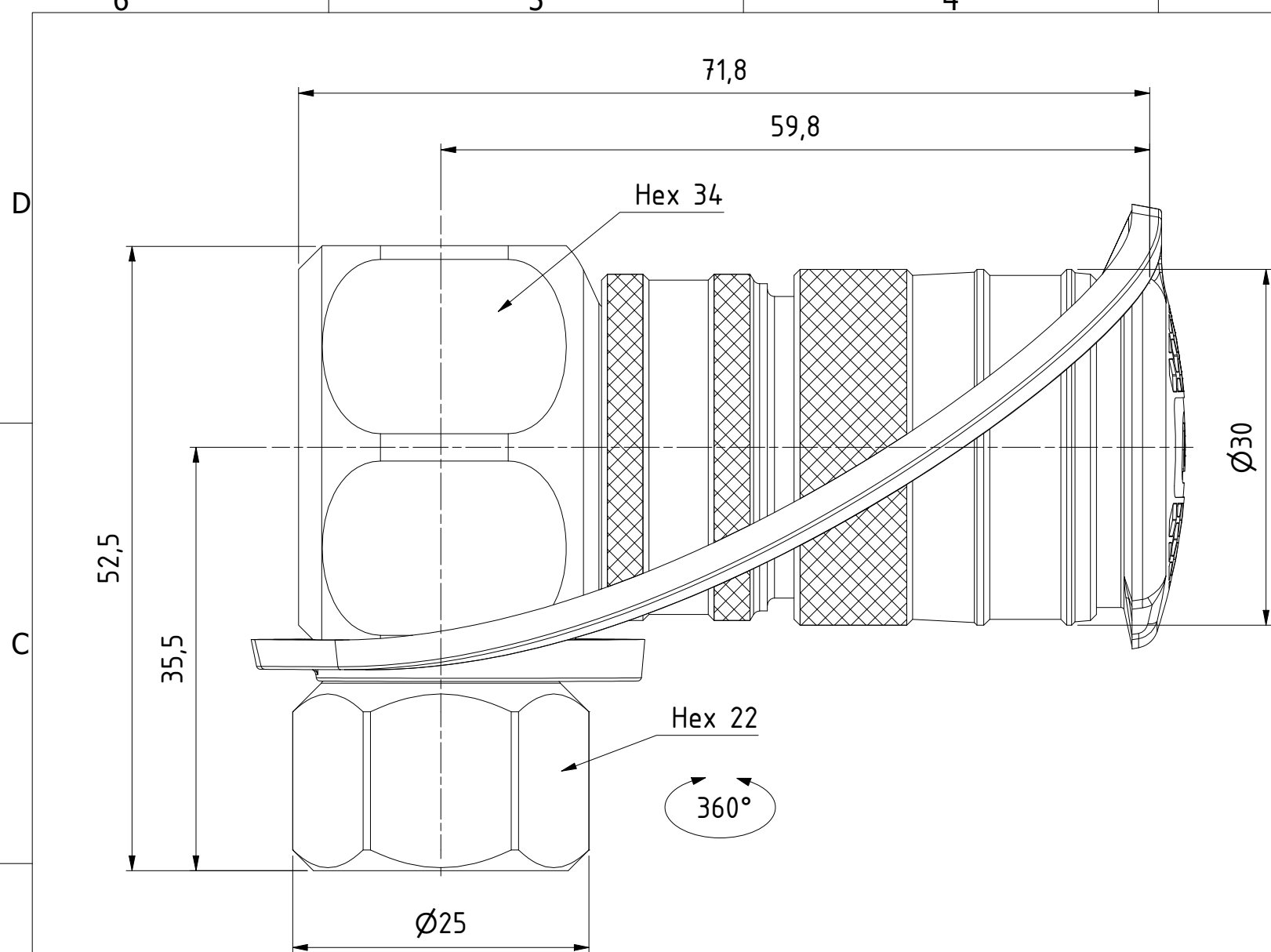
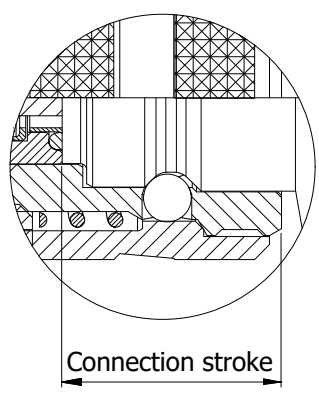


This document must not be copied, either completely or in part, without permission. Any infringement will have legal consequences ©



1 : 1

Product No.	101251250
Nominal flow \varnothing DN:	2.5 mm
Connection Stroke:	20.2 mm
Max WP Connected:	2500 bar
Max WP Disconnected:	2500 bar
Min BP Connected:	5000 bar
Min BP Disconnected:	5000 bar
Temperature range:	-30°C - +100°C
Connection:	G 1/4" Fem
Sealing material:	NBR
Hexagon:	34



Item	Qty	Description	Material
26	1	Dust Cap	TPE, black
25	1	Sleeve	Steel, Zn-Ni 9 transp.
24	2	Ball	Stainless steel
23	1	Swivel housing	Steel, Zn 8 black
22	1	Spring	Stainless steel
21	1	Spring	Steel
20	1	O-ring	NBR
19	1	O-ring	NBR
18	1	Spring housing	Steel
17	1	O-ring sleeve	Steel
16	1	Expansion sleeve	Plastic
15	1	Washer	Steel
14	1	Seal	NBR
13	1	Valve	Steel, FeZn5
12	1	O-ring	NBR
11	1	Valve seat	Steel
10	1	Locking sleeve	Hard.steel,Zn-Ni 9 transp
9	9	Ball	Stainless steel
8	1	Front part	Steel, Zn-Ni 10 black
7	1	Distance sleeve	Steel
6	2	Back-up ring	PTFE
5	2	Back-up ring	POM
4	1	Nut	Steel, Zn-Ni 9 transp.
3	1	Swivel connection	Steel, Zn-Ni 9 transp.
2	1	Locking screw	Steel, Zn 8 silver
1	3	Lip seal	NBR

	Scale	2 : 1	Drawn	CABAO	Checked	FR	Appr.	JE	ECO	12105	Date	2018-06-11
	Assembly Drawing 501251250								Drawing No.	Issue Sheet AB 1/(1)		

A3