

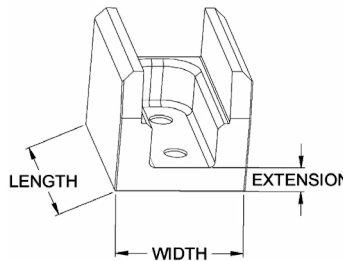
TU**ACCESSORY****REACTION ARM EXTENSION BOOT**

TU Series Square Drive
Hydraulic Torque Wrench Accessory

torquaiTM

TU Series Square Drive Hydraulic Torque Wrench - Reaction Arm Extension Boot

| MODEL # | SIZE | PART # | EXTENSION (IN/MM) | LENGTH (IN/MM) | WIDTH (IN/MM) |
|---------|--------|----------------|----------------------|-------------------|------------------|
| TU-2 | 1 INCH | ATU-2-03-EXT1 | 1.19/30 | 1.52/39 | 1.00/25 |
| TU-2 | 2 INCH | ATU-2-03-EXT2 | 2.19/56 | 1.52/39 | 1.00/25 |
| TU-2 | 3 INCH | ATU-2-03-EXT3 | 3.19/81 | 1.52/39 | 1.00/25 |
| TU-3 | 1 INCH | ATU-3-03-EXT1 | 1.19/30 | 2.00/51 | 1.25/32 |
| TU-3 | 2 INCH | ATU-3-03-EXT2 | 2.19/56 | 2.00/51 | 1.25/32 |
| TU-3 | 3 INCH | ATU-3-03-EXT3 | 3.19/81 | 2.00/51 | 1.25/32 |
| TU-5 | N/A | N/A | N/A | N/A | N/A |
| TU-07 | 1 INCH | ATU-7-03-EXT1 | 1.28/33 | 2.74/70 | 1.75/44 |
| TU-07 | 2 INCH | ATU-7-03-EXT2 | 2.28/58 | 2.74/70 | 1.75/44 |
| TU-07 | 3 INCH | ATU-7-03-EXT3 | 3.28/83 | 2.74/70 | 1.75/44 |
| TU-11 | 1 INCH | ATU-11-03-EXT1 | 1.28/33 | 3.00/76 | 2.00/51 |
| TU-11 | 2 INCH | ATU-11-03-EXT2 | 2.28/58 | 3.00/76 | 2.00/51 |
| TU-11 | 3 INCH | ATU-11-03-EXT3 | 3.28/83 | 3.00/76 | 2.00/51 |
| TU-20 | 1 INCH | ATU-20-03-EXT1 | 1.49/38 | 4.16/106 | 3.19/81 |
| TU-20 | 2 INCH | ATU-20-03-EXT2 | 2.49/63 | 3.66/93 | 3.19/81 |
| TU-27 | 1 INCH | ATU-27-03-EXT1 | 1.31/33 | 4.00/102 | 2.50/64 |
| TU-27 | N/A | N/A | N/A | N/A | N/A3 |
| TU-27 | N/A | N/A | N/A | N/A | N/A |
| TU-60 | N/A | N/A | N/A | N/A | N/A |



TU Series - Reaction Arm Extension Boot

This accessory is available for most models in 1", 2" or 3". It provides additional reaction length at the base of the standard reaction arm.

