



NSX Serisi Tek Etkili Yay Dönüslü Yassı Tip Hidrolik Silindirler



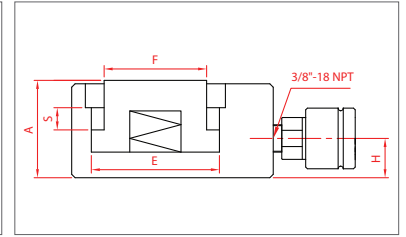
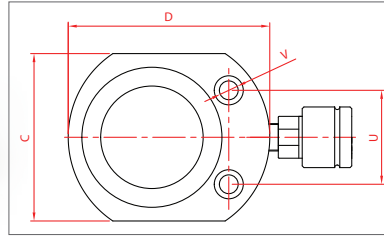
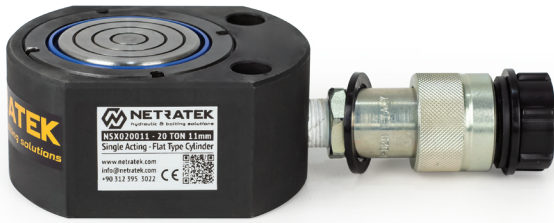
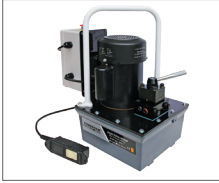
NSX Series Single Acting Spring Return Flat Type Hydraulic Cylinders



- › 5-150 ton seçeneekli 700 bar yassı tip silindirler
 - › 6-16 mm arası stroke (kurs boyu) seçeneği
 - › Tek etkili, yay dönüslü gelişmiş hidrolik sistem
 - › Yüksek kaliteli çatlak kontrollü 4140 çelikten imal
 - › Yatay ya da ters her yönde çalışmaya uygun
 - › Ekstra yassı yapısı ile dar bölgeler için ideal
 - › Piston sistemi paslanmaya karşı krom kaplamalı
 - › Korozyona karşı dayanıklı fosfat kaplama
 - › 2 yıl garantili, Türkiye'de yedek parça ve servis
- › 700 bar flat type cylinders from 5 to 150 tons
 - › 6-16 mm stroke options for various applications
 - › Single-acting, spring-return standard hydraulic system
 - › Manufactured from high quality crack controlled 4140 steel
 - › Suitable for working horizontally or vertically
 - › Ideal for narrow areas with extra flat structure
 - › Piston system is chrome-plated against rust
 - › Corrosion-resistant black phosphate coating
 - › 2 year warranty, parts and service in Turkey

Tamamlayıcı Ekipmanlar & Aksesuarlar / Complementary Equipment & Accessories

El Pompaları / Hand Pumps Güç Üniteleri / Power Packs Havallı Pompalar / Air Pumps 700 Bar Hortumlar / Hoses Kaplinler / Quick Couplings Manometreler / Gauges



Model No.	Kapasite Capacity	Stroke	Etki Alanı Effective Area	Yağ Hacmi Oil Capacity	Kapalı Boy Closed Height	Dış Çap Outer Dia.	Ağırlık Weight	Ölçüler (mm) Dimensions					
#	Ton	S (mm)	cm ²	cm ³	A (mm)	D (mm)	kg	C	E	F	H	U	V
NSX005006	5 (5)	6	7,1	8	40	65	0,6	41	30	25	19	28,4	5,5
NSX005011		11		12	45		0,7						
NSX010006	10 (11)	6	15,9	17	43	78	1,2	60	45	40	19	37	6,5
NSX010011		11		27	48		1,3						
NSX020011	20 (22)	11	31,2	55	53	106	2,9	85	63	55	20	50	9
NSX030014	30 (31)	14	44,2	100	70	118	4,8	98	75	60	21	55	11
NSX050016	50 (55)	16	78,5	181	80	148	8,7	126	100	80	21	75	13
NSX080016	80 (79)	16	113	283	87	178	14,4	159	120	100	21	90	13
NSX100016	100 (108)	16	153,9	392	92	195	18,4	170	140	120	21	100	13
NSX150016	150 (159)	16	226,9	626	102	255	27,5	200	170	150	21	120	13