



- › 700 bar maksimum çalışma basıncı
 - › 5-220 ton arası 700 bar hidrolik silindirler
 - › 25-362 mm arası stroke seçenekleri
 - › Tek etkili, yay dönüslü standart hidrolik sistem
 - › Yüksek kaliteli çatlak kontrollü 4140 çelikten imal
 - › Yatay ya da ters her yönde çalışmaya uygun
 - › Endüstriyel ağır işlere dayanıklı sağlam yapı
 - › Dış açılmış montaj bağlantıları ve taban delikleri
 - › Piston sistemi paslanmaya karşı krom kaplamalı
 - › 2 yıl garantili, Türkiye'de yedek parça ve servis
- › 700 bar maximum working pressure
 - › 700 bar hydraulic cylinders from 5 to 220 tons
 - › 25-362 mm stroke options for various applications
 - › Single-acting, spring-return standard hydraulic system
 - › Manufactured from high quality crack controlled 4140 steel
 - › Suitable for working horizontally or vertically
 - › Robust construction resistant to heavy industrial work
 - › Threaded mounting connections and base holes
 - › Piston system is chrome-plated against rust
 - › 2 year warranty, parts and service in Turkey

Tamamlayıcı Ekipmanlar / Complementary Equipment

El Pompaları / Hand Pumps



Güç Üniteleri / Power Packs



Havalı Pompalar / Air Pumps



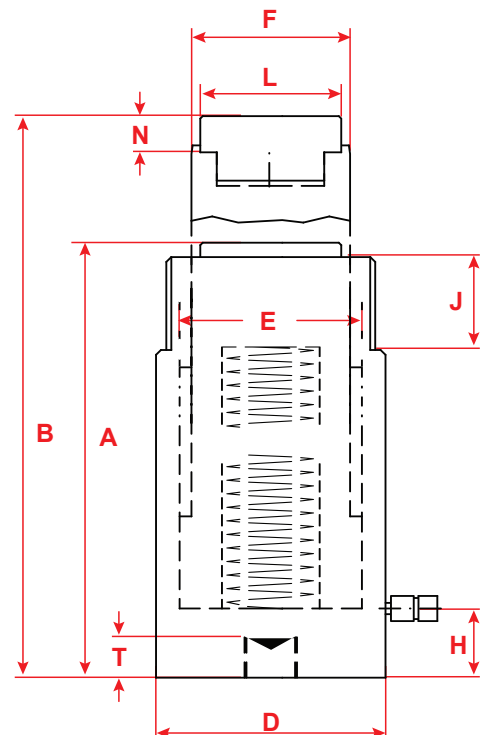
700 Bar Hortumlar / Hoses



Manometreler / Gauges



Kaplinler / Quick Couplings





Parça Part	Kapasite Capacity		Stroke	Etki Alanı Effect Area	Yağ Hacmi Oil Cap.	Ölçüler (mm) Dimensions										Ağırlık Weight
	Ton	kN				mm	cm ²	cm ³	A	B	D	E	F	H	J	
NSS00502	5	49	25	7	18	110	135	40	30	25	19	28	25	6	14	1
NSS00508	5	49	76	7	54	168	244	40	30	25	19	28	25	6	14	1.5
NSS00513	5	49	127	7	90	219	346	40	30	25	19	28	25	6	14	1.9
NSS00518	5	49	180	7	128	276	456	40	30	25	19	28	25	6	14	2.4
NSS00523	5	49	232	7	164	328	560	40	30	25	19	28	25	6	14	2.8
NSS01002	10	109	25	16	40	90	115	60	45	36	20	32	*	*	12	1.8
NSS01005	10	109	54	16	86	121	175	60	45	36	20	32	28	10	12	2.4
NSS01010	10	109	105	16	167	172	277	60	45	36	20	32	28	10	12	3.3
NSS01015	10	109	155	16	247	247	402	60	45	36	20	32	28	10	12	4.7
NSS01020	10	109	205	16	326	301	506	60	45	36	20	32	28	10	12	5.7
NSS01025	10	109	257	16	409	352	609	60	45	36	20	32	28	10	12	6.6
NSS01030	10	109	307	16	489	402	709	60	45	36	20	32	28	10	12	7.4
NSS01035	10	109	355	16	565	454	809	60	45	36	20	32	28	10	12	8.4
NSS01502	15	163	25	24	60	127	152	75	55	45	20	32	*	*	12	4.2
NSS01505	15	163	54	24	129	155	209	75	55	45	20	32	35	8	12	5
NSS01510	15	163	105	24	250	205	310	75	55	45	20	32	35	8	12	6.4
NSS01515	15	163	155	24	369	275	430	75	55	45	20	32	35	8	12	8.5
NSS01520	15	163	205	24	487	327	532	75	55	45	20	32	35	8	12	10
NSS01525	15	163	257	24	611	379	636	75	55	45	20	32	35	8	12	11.5
NSS01530	15	163	307	24	730	426	733	75	55	45	20	32	35	8	12	12.8
NSS01535	15	163	355	24	844	477	832	75	55	45	20	32	35	8	12	14.2
NSS02302	23	228	25	33	83	140	165	85	65	56	25	45	45	10	19	6
NSS02305	23	228	51	33	170	166	217	85	65	56	25	45	45	10	19	7
NSS02310	23	228	102	33	339	217	319	85	65	56	25	45	45	10	19	8.9
NSS02315	23	228	159	33	528	277	436	85	65	56	25	45	45	10	19	11.2
NSS02321	23	228	210	33	697	327	537	85	65	56	25	45	45	10	19	13
NSS02326	23	228	261	33	866	379	640	85	65	56	25	45	45	10	19	15
NSS02331	23	228	310	33	1029	430	740	85	65	56	25	45	45	10	19	16.9
NSS02336	23	228	362	33	1201	480	842	85	65	56	25	45	45	10	19	18.8
NSS03006	30	303	60	44	265	165	225	100	75	60	30	48	45	10	19	9.3
NSS03015	30	303	150	44	663	270	420	100	75	60	30	48	45	10	19	14.6
NSS03021	30	303	210	44	928	340	550	100	75	60	30	48	45	10	19	18.2
NSS05006	50	487	60	71	426	176	236	127	95	80	35	55	61	12	19	16.4
NSS05010	50	487	102	71	723	227	329	127	95	80	35	55	61	12	19	20.7
NSS05016	50	487	160	71	1134	285	445	127	95	80	35	55	61	12	19	25.5
NSS05020	50	487	200	71	1418	325	525	127	95	80	35	55	61	12	19	29
NSS05025	50	487	250	71	1772	376	626	127	95	80	35	55	61	12	19	33.1
NSS05034	50	487	339	71	2402	465	804	127	95	80	35	55	61	12	19	40.4
NSS07516	75	713	160	104	1661	285	445	150	115	90	35	55	61	12	19	32
NSS07533	75	713	330	104	3426	495	825	150	115	90	35	55	61	12	19	54
NSS10006	100	911	60	133	797	180	240	177	130	110	40	55	88	14	25	32
NSS10015	100	911	150	133	1991	300	450	177	130	110	40	55	88	14	25	53
NSS10026	100	911	260	133	3451	449	709	177	130	110	40	55	88	14	25	78.5
NSS14006	140	1380	60	201	1206	190	250	216	160	140	40	55	88	15	25	52
NSS14015	140	1380	150	201	3015	320	470	216	160	140	40	55	88	15	25	85.7
NSS14026	140	1380	260	201	5226	470	730	216	160	140	40	55	88	15	25	124.5
NSS22015	220	2156	150	314	4710	340	490	250	200	160	40	-	111	15	-	116.5