

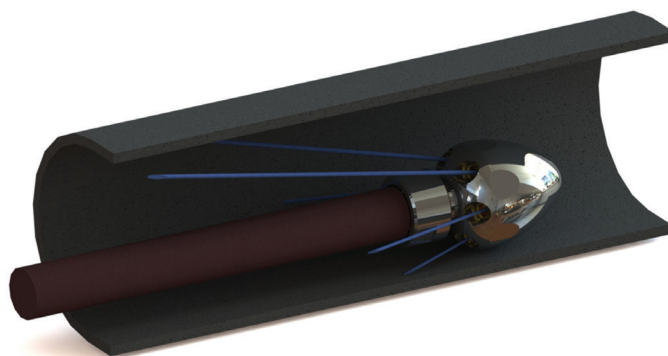
Order Number	Part Number	W.P.		Connection	D (mm)	L (mm)	Insert Nozzles No.	Inert Size	A	SW (mm)	Q (l/min)	Weight (kg)
		bar	psi									
EG01	EG3-B16-B-01	250	3650	Female-1/2" BSPP	50	61	6	M10x1.5	6x15°	48	50-250	0.5

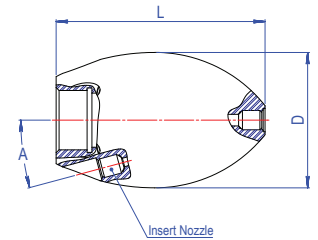
The lightweight, outlet jet angle and exceptional design of the Egg Nozzle provide excellent sliding ability to remove the blockages in the sewer pipes without causing any damages. The divider chamber is designed inside the nozzle to reduce the rotational momentum and control the turbulence of the input water and distribute the water flow between the outlets equally. Similarly, it continuously directs the water flow out of the inserts, which moves the nozzle through the sewer pipe without damaging it. Finally, this nozzle has six backward outlets that are designed as the insert seats.

The insert seats are designed to avoid damage while moving through the blocked pipes. The egg shape enables this nozzle to move in the sewer pipes that contain sediments, mud, sand, and slime, and to perfectly remove any blockages.

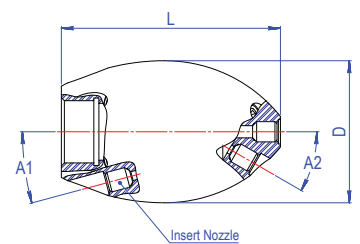
In order to obtain the highest efficiency, the surface of the Egg Nozzle is coated with special materials that are highly resistant against abrasion.

Please refer to the High-pressure Nozzles section to select the right insert Nozzle according to your desired flow rate.





Order Number	Part Number	W.P.		Connection	D (mm)	L (mm)	Insert Nozzles No.	Nozzle Type	A	Q (l/min)	Weight (kg)
		bar	psi								
QNC01	QNC3-B24-FB-01	250	3650	Female-1" BSPP	70	108	7	M10x1.5	6x15°	50-250	2



Order Number	Part Number	W.P.		Connection	D (mm)	L (mm)	Insert Nozzles No.	Nozzle Type	A1	A2	Q (l/min)	Weight (kg)
		bar	psi									
QNC02	QNC3-B24-FLB-01	250	3650	Female-1" BSPP	70	108	10	M10x1.5	6x15°	3x30°	50-250	2