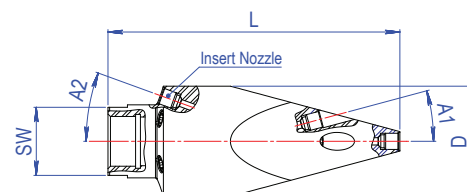
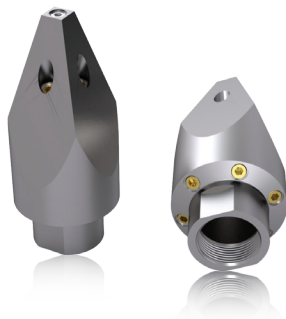




Quadrangle Nozzles

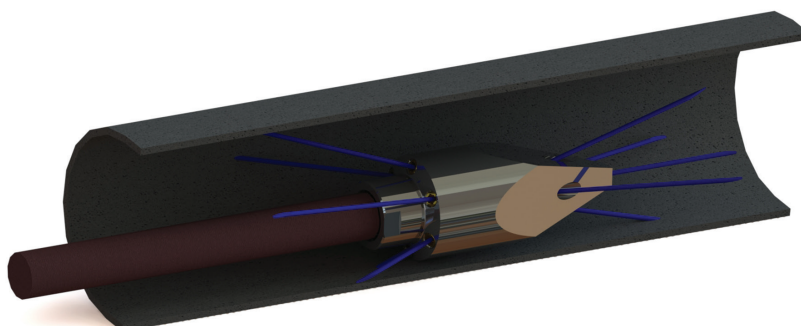


Order Number	Part Number	W.P.		Connection	D (mm)	L (mm)	Insert Nozzles No.	Insert Size	A1	A2	SW (mm)	Q (l/min)	Weight (kg)
		bar	psi										
QR01	QR3-B24-FLB-01	250	3650	Female-1" BSPP	68	180	11	M10x1.5	4x15°	6x20°	42	50-250	2.5
QR02	QR3-B24-FLB-02	250	3650	Female-1" BSPP	68	180	11	M10x1	4x15°	6x20°	38	50-250	2.5
QR03	QR3-B26-FLB-01	250	3650	Female- 1,1/4" BSPP	78	180	11	M10x1	4x15°	6x20°	48	50-250	2.7

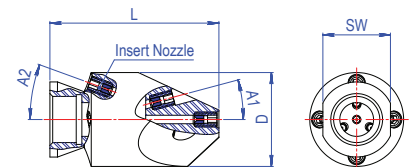
The sharp edges and both forward and backward outlets are able to remove any kind of blockage and clogging. When it is not possible to access the bottom of the pipe due to the accumulation of the deposits, this type of nozzle is the wisest and most practical choice.

The hardened stainless steel and special materials coating exhibits optimal wear resistance behavior.

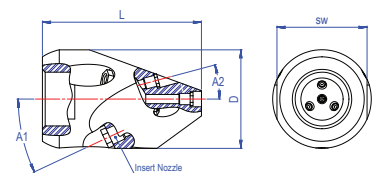
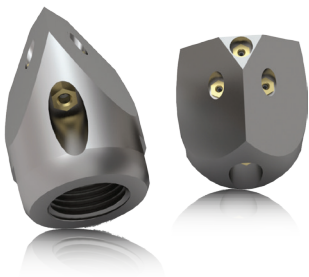
All varieties of these nozzles are equipped with interchangeable insert Nozzles which are made of stainless steel and are installed in the rear and front holes.



Triangle Nozzles



Order Number	Part Number	W.P.		Connection	D (mm)	L (mm)	Insert Nozzles No.	Insert Size	A1	A2	SW (mm)	Q (l/min)	Weight (kg)
		bar	psi										
TRN02	TRN3-B20-FLB-02	250	3650	Female-3/4" BSPP	50	105	8	M8x1.25	3x15°	4x20°	36	50-250	0.8



Order Number	Part Number	W.P.		Connection	D (mm)	L (mm)	Insert Nozzles No.	Insert Size 1	Insert Size 2	A1	A2	SW (mm)	Q (l/min)	Weight (kg)
		bar	psi											
TRN03	TRN3-N9-FLB-01	250	3650	Female - 1/2" NPT	35	56.5	7	M4x0.7	M6x1	3x25°	3x15°	32	50-250	0.2

These nozzles are designed in a variety of models for different pipes.

Matching the nozzle appropriately in accordance with the intended operation and application will accelerate the sediment removal operation and increase its efficiency.

One of the most suitable nozzles for sediment removal operation in sewer pipes is the angle-faced Nozzle whose main application is to move the remaining sediment in or against the direction of water flow.